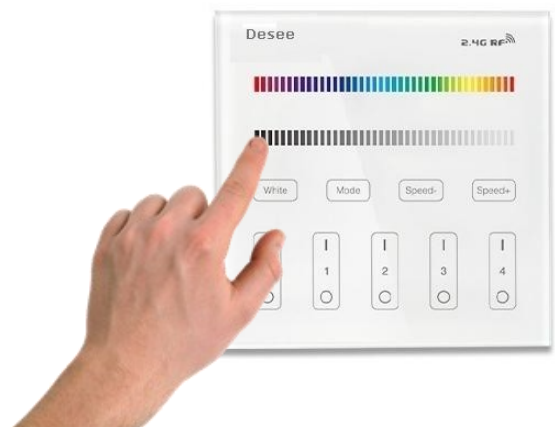


# Using the Desee/MiLight B3 Controller With PixelatorPlus

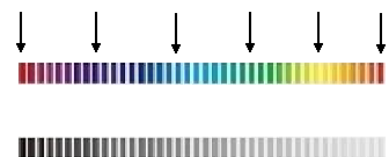
With the intensity bar set to 30% or more, the lights will assume the colour of the colour selector. This will allow dimming between 10% and 100% at the selected colour.



Selecting minimum intensity enables dynamic modes.



The dynamic effects are triggered by touching the colour bar at the points indicated.



Pressing the 'white' button invokes white mode. For RGB strips this means blended white: for RGBW strips this brings on the dedicated white chip.

